

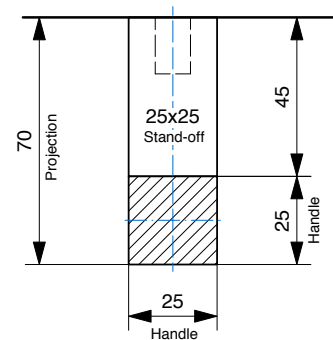
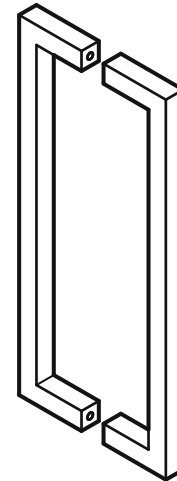


DDA Compliant - 316 Marine Grade Stainless Steel

CODE	SECTION	PROJECTION	LENGTH			CTC
BAH-150/A	19 25 32	64 70 77	319	325	332	300
BAH-150/B	19 25 32	64 70 77	469	475	482	450
BAH-150/C	19 25 32	64 70 77	619	625	632	600
BAH-150/D	19 25 32	64 70 77	719	725	732	700
BAH-150/E	19 25 32	64 70 77	819	825	832	800
BAH-150/F	19 25 32	64 70 77	919	925	932	900
BAH-150/G	19 25 32	64 70 77	1019	1025	1032	1000
BAH-150/H	19 25 32	64 70 77	1119	1125	1132	1100
BAH-150/I	19 25 32	64 70 77	1219	1225	1232	1200
BAH-150/J	19 25 32	64 70 77	1319	1325	1332	1300
BAH-150/K	19 25 32	64 70 77	1419	1425	1432	1400
BAH-150/L	19 25 32	64 70 77	1519	1525	1532	1500
BAH-150/M	19 25 32	64 70 77	1619	1625	1632	1600
BAH-150/N	19 25 32	64 70 77	1719	1725	1732	1700
BAH-150/O	19 25 32	64 70 77	1819	1825	1832	1800
BAH-150/P	19 25 32	64 70 77	1919	1925	1932	1900
BAH-150/Q	19 25 32	64 70 77	2019	2025	2032	2000
BAH-150/R	19 25 32	64 70 77	2119	2125	2132	2100
BAH-150/S	19 25 32	64 70 77	2219	2225	2232	2200
BAH-150/T	19 25 32	64 70 77	2319	2325	2332	2300
BAH-150/U	19 25 32	64 70 77	2419	2425	2432	2400

- Measurements in **bold** indicate handles that require intermediate fixing
- Special sizes available upon request

FINISHES	
Standard:	SSS/PSS
Options:	Powdercoat Dulux
Electroplate:	SBN ORB BN CO



How to specify

	PRODUCT CODE	LENGTH	FINISH	FIXING	DOOR TYPE
Example:	BAH-150/A	332mm	SSS	B	GD

D = DISK FIX
Disk fixed - **Single**

For Solid or Tube Handles

C = CONCEALED FIX
Coach Bolt fixed - **Single**

For Solid or Tube Handles

B = BACK to BACK FIX
Back to Back fixed - **Pair**

For Solid or Tube Handles

PLEASE SPECIFY THE DOOR TYPE
GD: Glass
TM: Timber
AL: Aluminium