

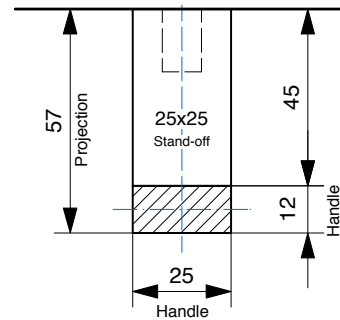
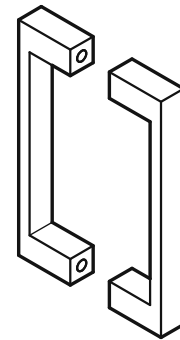


DDA Compliant - 316 Marine Grade Stainless Steel

CODE	SECTION	PROJECTION	LENGTH	CTC
BAH-165/A	25 x 12	57	225	200
BAH-165/B	25 x 12	57	325	300
BAH-165/C	25 x 12	57	425	400
BAH-165/D	25 x 12	57	525	500
BAH-165/E	25 x 12	57	625	600

• Special sizes available upon request

FINISHES	
Standard:	SSS/PSS
Options:	Powdercoat Dulux
Electroplate:	SBN ORB BN CO

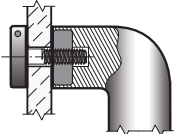


### How to specify

	PRODUCT CODE	LENGTH	FINISH	FIXING	DOOR TYPE
Example:	BAH-165/A	225mm	SSS	B	GD

#### D = DISK FIX

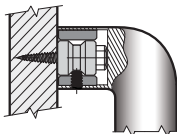
Disk fixed - **Single**



For Solid or Tube Handles

#### C = CONCEALED FIX

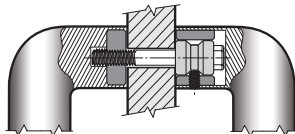
Coach Bolt fixed - **Single**



For Solid or Tube Handles

#### B = BACK to BACK FIX

Back to Back fixed - **Pair**



For Solid or Tube Handles

PLEASE SPECIFY THE DOOR TYPE

**GD:** Glass

**TM:** Timber

**AL:** Aluminium