

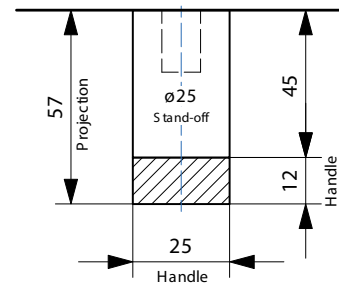
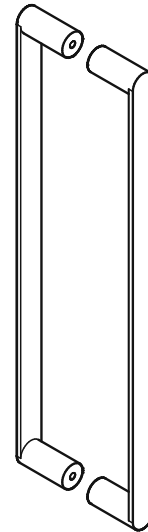


DDA Compliant - 316 Marine Grade Stainless Steel

CODE	SECTION	PROJECTION	LENGTH	CTC
BAH-166/A	25 x 12	57	325	300
BAH-166/B	25 x 12	57	475	450
BAH-166/C	25 x 12	57	625	600
BAH-166/D	25 x 12	57	925	900
BAH-166/E	25 x 12	57	1225	1200
BAH-166/F	25 x 12	57	1525	1500

- Measurements in **bold** indicate handles that require intermediate fixing
- Special sizes available upon request

FINISHES	
Standard:	SSS/PSS
Options:	Powdercoat Dulux
Electroplate:	SBN ORB BN CO

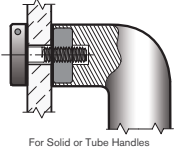


How to specify

	PRODUCT CODE	LENGTH	FINISH	FIXING	DOOR TYPE
Example:	BAH-166/A	325mm	SSS	B	GD

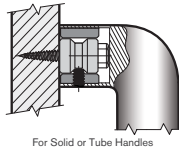
D = DISK FIX

Disk fixed - **Single**



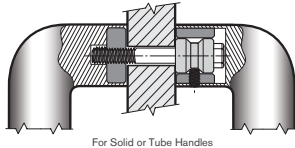
C = CONCEALED FIX

Coach Bolt fixed - **Single**



B = BACK to BACK FIX

Back to Back fixed - **Pair**



PLEASE SPECIFY THE DOOR TYPE
GD: Glass
TM: Timber
AL: Aluminium