

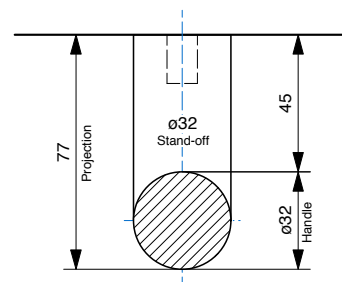
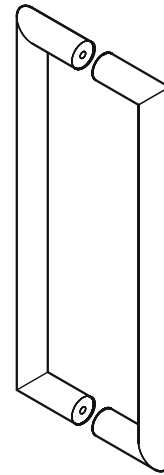


DDA Compliant - 316 Marine Grade Stainless Steel

| CODE | SECTION | PROJECTION | LENGTH | CTC |
|-----------|---------|------------|--------|------|
| BAH-167/A | Dia 32 | 77 | 332 | 300 |
| BAH-167/B | Dia 32 | 77 | 482 | 450 |
| BAH-167/C | Dia 32 | 77 | 632 | 600 |
| BAH-167/D | Dia 32 | 77 | 932 | 900 |
| BAH-167/E | Dia 32 | 77 | 1232 | 1200 |
| BAH-167/F | Dia 32 | 77 | 1532 | 1500 |
| BAH-167/G | Dia 32 | 77 | 1832 | 1800 |
| BAH-167/H | Dia 32 | 77 | 2132 | 2100 |
| BAH-167/I | Dia 32 | 77 | 2432 | 2400 |

• Special sizes available upon request

| FINISHES | |
|---------------|------------------------|
| Standard: | SSS/PSS |
| Options: | Powdercoat Dulux |
| Electroplate: | SBN ORB BN CO |

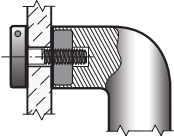


How to specify

| | PRODUCT CODE | LENGTH | FINISH | FIXING | DOOR TYPE |
|----------|--------------|--------|--------|--------|-----------|
| Example: | BAH-167/A | 332mm | SSS | B | GD |

D = DISK FIX

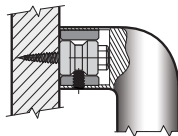
Disk fixed - **Single**



For Solid or Tube Handles

C = CONCEALED FIX

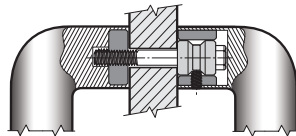
Coach Bolt fixed - **Single**



For Solid or Tube Handles

B = BACK to BACK FIX

Back to Back fixed - **Pair**



For Solid or Tube Handles

PLEASE SPECIFY THE DOOR TYPE

GD: Glass

TM: Timber

AL: Aluminium