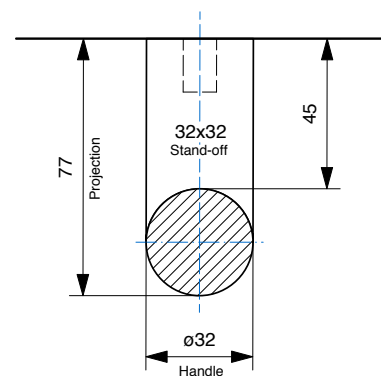




DDA Compliant - Timber Handle

CODE	SECTION	PROJECTION	LENGTH	CTC
BAH-176/A	Dia 32	77	300	200
BAH-176/B	Dia 32	77	400	300
BAH-176/C	Dia 32	77	500	400
BAH-176/D	Dia 32	77	600	500
BAH-176/E	Dia 32	77	700	600
BAH-176/F	Dia 32	77	800	700
BAH-176/G	Dia 32	77	900	800
BAH-176/H	Dia 32	77	1000	900
BAH-176/I	Dia 32	77	1100	1000
BAH-176/J	Dia 32	77	1200	1100
BAH-176/K	Dia 32	77	1300	1200
BAH-176/L	Dia 32	77	1400	1300
BAH-176/M	Dia <b>32</b>	77	1500	1400
BAH-176/N	Dia <b>32</b>	77	1600	1500
BAH-176/O	Dia <b>32</b>	77	1700	1600
BAH-176/P	Dia <b>32</b>	77	1800	1700
BAH-176/Q	Dia <b>32</b>	77	1900	1800
BAH-176/R	Dia <b>32</b>	77	2000	1900
BAH-176/S	Dia <b>32</b>	77	2100	2000
BAH-176/T	Dia <b>32</b>	77	2200	2100
BAH-176/U	Dia <b>32</b>	77	2300	2200
BAH-176/V	Dia <b>32</b>	77	2400	2300

FINISHES	
Standard:	SSS/PSS
Options:	Powdercoat Dulux
Electroplate:	SBN ORB BN CO



- Measurements in **bold** indicate handles that require intermediate fixing
- Special sizes available upon request
- Standard Timber: Tasmanian Oak. Other species available: American White Oak, Spotted Gum, Blackbutt, Hoop Pine, PNG Rosewood, Tallowwood, Jarrah

### How to specify

	PRODUCT CODE	LENGTH	FINISH	FIXING	DOOR TYPE
Example:	BAH-176/A	300mm	SSS	B	GD

