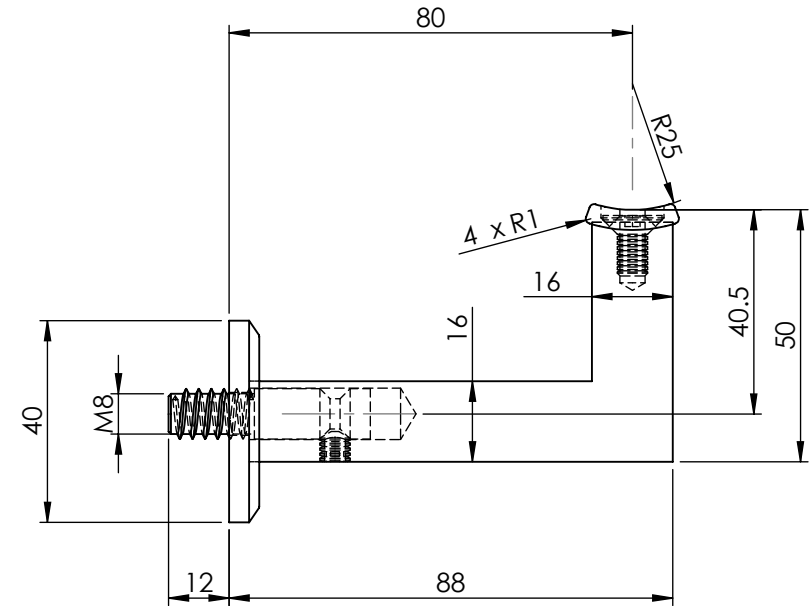


DETAIL ITEM ⑥



DETAIL ITEM ⑤

ITEM NO.	PART NUMBER	DESCRIPTION	QTY.
1	SS620GCT-1	ARM	1
2	SS620GCT-2	RAIL MOUNT	1
3	SS620GCT-3	BASE	1
4	SS620GCT-4	BASE-NUT	1
5	SS620GCT-5	WASHER-NYLON	1
6	SS620GCT-6	WASHER-NYLON	1
7	SS620GCT-7	THREADED RETAINER	1
8	B-CS-M6-12	BOLT-C/SUNK-M6X12MM	1
9	SS-M6-5	SET SCREW-M5X6MM	1
10	SCS-5-40	SCREW-C/SUNK-5MMX40MM	2

DRAWN	B DOOLAN	18/06/2015	CAT NO:
CHK'D	U WAUGE	18/06/2015	
MATERIAL	316 STAINLESS STEEL		
FINISH	POLISHED		
WEIGHT			

**EMROWARE™**  
www.emro.com.au

This drawing has been made with due care and attention however Emro do not accept any responsibility for variations. This drawing and information contained is the property of Emro and cannot be used without their consent.

REV: **A**

# SS620GCT

DESCRIPTION:  
**ARCHITECTURAL STAIR RAIL BRACKET-  
COMPLIES WITH AUSTRALIAN  
STANDARD AS1428.1-2009**