

Threshold Plates and Ramps

IS4070, IS4075, IS4077, IS4078si



These threshold ramps are utilised in buildings where wheelchairs and trolleys are used or to compensate for uneven floors. Their rate of incline ensures compliance with the 'access for people with disability' requirement, particularly for wheelchair traffic.

These threshold ramps have a durable, anodised finish and are supplied with PVC bedding pads to help eliminate vibration, noise and moisture ingress.

Gradients

- IS4070 1:8
- IS4075 1:12
- IS4077 1:8
- IS4078si 1:8

Standard lengths

- 1000mm
- 2250mm
- Also available in: 250mm increments from 1000mm to 5000mm


Standard colours

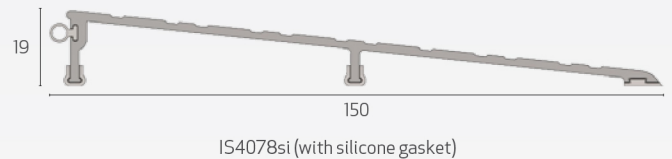
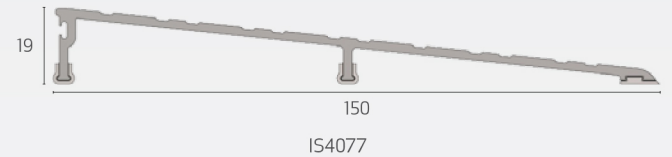
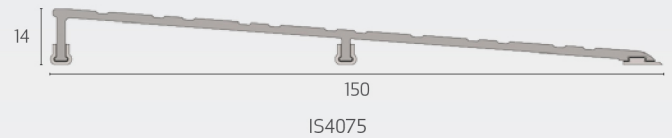
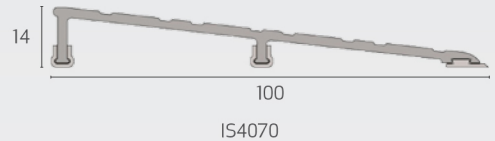
- Silver anodised aluminium

Fixing

- Stainless steel fixing screws and plugs supplied
- These extrusions can be positioned back-to-back to provide a two-way threshold ramp

Approval/s

- Fire tested to AS1530 Part 4 in accordance with AS1905 Part 1
-  Certifications GY1.R26629, GVWZ.R26629, GVWZ7.R26629
- Complies with AS1428 Part 1 (Design for access and mobility)
- Conforms to NCC D2.15 & D3.3 (Access for people with disabilities)



IS4070



IS4075



IS4077



IS4078si



Length:

Description of contents

- Aluminium threshold
- Stainless Steel screws and plugs
- Vinyl feet
- Silicone rubber gasket (IS4078Si)
- Fitting instruction

Tools required for installation

- Tape measure
- Pencil or marker
- Saw (power or hand)
- Power drill
- 4.5mm drill bit
- 6.0mm masonry bit
- Countersink
- Construction adhesive

Other Integrity™ Architectural Seals include:

- Door Perimeter Seals
- Door Bottom Seals
- Automatic Door Bottom Seals
- Threshold Plates
- Brush Seals
- Magnetic Seals

Contact your nearest Kilargo office for further details.

Installation detail: Threshold ramps

It is not necessary to remove the door from its hinges.

Step 1 Remove the plate from the packaging and measure the door width, between jambs or door stops to determine the plate length required.

Step 2 Measure the threshold and mark with a pencil the desired length (and profile if cutting around the door stop).

Step 3 Pull back the vinyl bedding feet and silicone gasket (IS4078si) and cut the threshold plate to length using a saw. Replace the vinyl feet and silicone gasket (IS4078si) and trim to length with a knife.

Step 4 Position the plate on the door sill in required location (ensuring edge of carpet is butted up against back wall of seal).

Step 5 Screw Fix:
Using a power drill with a 4.5mm drill bit, create fixing holes in the plate at the required positions. Countersink to ensure flush screw heads. With the plate in position, mark hole centres on the floor. Using a masonry drill, create fixing holes. Clean away dust and insert supplied plastic plugs. Screw fix.
Adhesive Fix:
Apply adhesive to the back of the threshold plate and place it in the desired position. (Discard the vinyl feet if not suitable)

Step 6 Where the threshold ramp meets the door stop, sealant may be applied to prevent ingress of moisture.

Step 7 Check to ensure the door can open and close without the need for excessive force.

Note: For effective operation, the IS4070 and IS4075 threshold ramps require a minimum of 16mm clearance between the door and the floor. The IS4077 and IS4078si requires a minimum of 21mm.

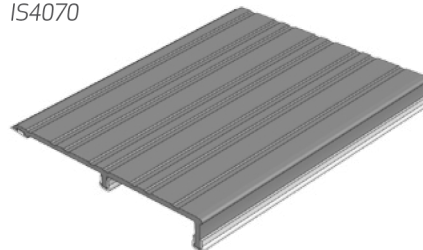
Important

Ensure that the installation of this product does not impede the opening or closing of the door.

Note

Recommendations as to methods for use of materials and construction details are based on the experience and knowledge of Kilargo and are given in good faith as a general guide and service to designers, contractors and manufacturers. Kilargo reserves the right to make alterations or delete any installation detail without prior notice.

IS4070



IS4075si

