

HAND DRYERS

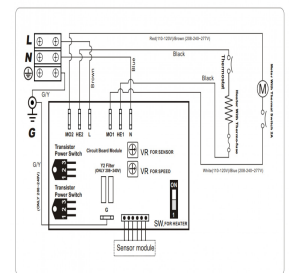
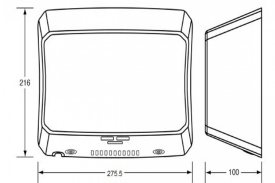


ML_ECOSLENDER_DESIGNER

EcoSlender Slimline Automatic Operation Hand Dryer in Designer Black

Specification

Material	1.2mm #304 Satin Stainless Steel
Finish	Designer Black Powder Coat
Motor	Brush Type, Dual Ball Bearings, 16,000-29,000 RPM, 95°C auto reset overload
Features	Contemporary curved design Patented high-flow dual-air outlets
Warranty	5 Year Warranty (3 Years Parts and Labour + 2 Years Parts only)
Power Use	240V, 50Hz, 1000W, 4.17A
Dimensions	275.5mmW x 216mmH x 100mmD
Operating Sound Level	68.9dB - 74.3dB (Adjustable)
Motor Speed (Max Settings)	29,000 RPM
Motor Speed (Min Settings)	16,000 RPM
Motor Speed Notes	250-500W Brush Type, Dual Ball Bearings, 95° auto rest overload
Air Speed (Max Settings)	82m/s==183 MPH
Air Speed (Min Settings)	70m/s==156 MPH
Heater Element Power	325-500 Watts, adjustable
Motor Cut-Off Time	60-sec power cut off, auto reset
Rated Power (Max Settings)	1000 Watts
Rated Power (Min Settings)	840 Watts
Rated Power Notes	Motor 250-500W, Heating Element 325-500W
Energy Per Dry (Min Settings)	3.5 Watt-hours (Wh)
Energy Per Dry (Max Settings)	4.17 Watt-hours (Wh)
Sensor Type	Infrared Automatic, Self Adjusting 170mm+/-20mm Blue LED indicates operation/range
Drying time	Less than 15 seconds
Carbon Dioxide Emission	305g Only
IP Rating	IP24
DP Rating	IPX 1
Sensor Type	Infrared Automatic, Self Adjusting 170mm+/-20mm Blue LED indicates operation/range
Drying time	Less than 15 seconds
IP Rating	IP24
DP Rating	IPX 1
Heater Element	325W - 500W (Adjustable)
Heater	ON/OFF Heating Options 85°C auto-resetting thermostat 142°C auto reset safety cut off
Warm Air	Speed: 45.5m/s - 70m/s (Adjustable). Temp: Ambient +25°
Protection	60-sec power cut off, auto reset
Timing	2 sec delay turn off after the last read
Case Security	2 SS theft-resistant hex drive screws (hex key supplied)
Net Weight	3.8kg
Also Available	ML_ECOSLENDER01_WHT - White



For Metlam Australia's extensive Hand Dryer Range Click on the link [here](#)

Note

* The unit can be hard-wired by an electrician or used with the cord and plug provided.

* This unit is accessible compliant when installed in accordance with AS1428.1 guidelines

Safety Approvals - [Click here to download more information](#)



Green Certificates



Downloads & Resources

- Care & Maintenance
- Installation instructions
- Mounting template
- Revit
- Promotions
- Associated Videos
- Discover the Difference
- Stainless Steel Cleaning & Maintenance
- TroubleShooting your Metlam Australia Hand Dryer

The photographs and line drawings of the products presented above are representational only. Metlam Australia Pty Ltd reserves the right to, and from time to time, make changes and improvements in design and dimensions.