

GRAB RAILS & BACK RESTS



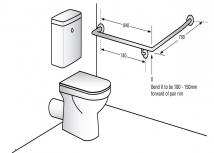
MLR101X_SS

30° Flush Mount Side Wall 840x700mm LH

Specification

Material	#304 Stainless Steel - 32mmØ
Finish	Satin Stainless Steel
Mounting	Concealed Fix - 78mmØ Mount Stand-off 55mm
Also Available	MLR101X_DESIGNER : Designer Matte Black MLR101X_ANMB : Antimicrobial
Note	* This unit is accessible compliant when installed in accordance with AS1428.1 guidelines. *It is the responsibility of the installer to ensure that the surface/substrate that the unit is installed upon and the fixings used are suitable to withstand the weight bearing loads of the unit and if required as per AS1428 / Australian building code regulations. *Compliant with the Force Requirements within AS1428.1: 2021, Section 14.

For installation instructions download the Metlam Australia App



Downloads & Resources

Care & Maintenance
 Installation instructions
 Revit
 Associated Videos
 Stainless Steel Cleaning & Maintenance
 How to install a Metlam Australia MLR101 Grab Rail

The photographs and line drawings of the products presented above are representational only.
 Metlam Australia Pty Ltd reserves the right to, and from time to time, make changes and improvements in design and dimensions.