

GRAB RAILS & BACK RESTS

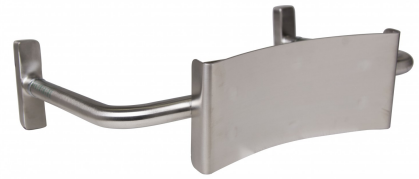


MLR119_VP

Vandal Proof Straight Arm Backrest

Specification

Material	#304 Satin Stainless Steel Frame & Mounts, #304 Satin Stainless Steel Backrest
Mounting	Concealed Fix
Features	20mm Adjustable Height on Backrest Backrest is secured using tamper-resistant security screws (supplied with unit)
Backrest Standoff	Adjustable depth to suit installation requirements
Also Available	MLR119_VP_ANMB ; Antimicrobial MLR119C_VP ; Curved Rail & Backrest Stainless Steel
Notes	* This unit is accessible compliant when installed in accordance with AS1428.1 guidelines. * It is the responsibility of the installer to ensure that the surface/substrate that the unit is installed upon and the fixings used are suitable to withstand the weight bearing loads of the unit and if required as per AS1428 / Australian building code regulations. * Compliant with the Force Requirements within AS1428.1:2021, Section 14.



For installation instructions download the Metlam Australia App



Downloads & Resources

Care & Maintenance
 Installation instructions
 Associated Videos
 Stainless Steel Cleaning & Maintenance
 How to install a Metlam Australia MLR119 Series Back Rest

The photographs and line drawings of the products presented above are representational only.
 Metlam Australia Pty Ltd reserves the right to, and from time to time, make changes and improvements in design and dimensions.