



TOILET PARTITION HARDWARE

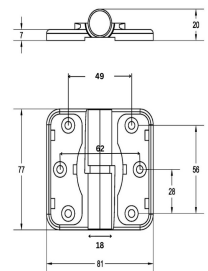


MODA_GRAVITY_SCP

Moda Gravity Hinge - Satin Chrome Plate

Specification

Material	Diecast Zinc, Alloy ZP3 Brass Shaft Nylon Inserts ABS Snap On Covers
Finish	Satin Chrome Plate
Specify	MODA_LHGRAVITY_SCP : Satin Chrome Plate MODA_RHGRAVITY_SCP : Satin Chrome Plate
Mounting	Concealed Screw Fix or Bolt Through
Features	<p>The step on the back of the hinge plus an increased vertical nylon drop allows for better movement from the gravity function.</p> <p>The nylons are set so the door can move past 90° whilst still functioning correctly.</p> <p>The nylon cover on the barrel keeps foreign substances from penetrating the pins and nylons allowing for a smoother opening and closing.</p> <p>Interchangeable hinge covers including Moda Spring Hinge.</p> <p>The fixing holes correlate with the bolt-through faceplates making installation a breeze.</p> <p>Reversible Hold Open / Hold Closed</p> <p>Lift off capability</p>
Load Rating	<p>15Kg per hinge</p> <p>For optimum performance - 2 hinges per door up to 30Kgs For doors over 30Kg allow for 15Kg per hinge</p> <p>Note: 3 Hinges per door is recommended to prevent door bowing</p>
Also Available	MODA_LHGRAVITY_DESIGNER : Designer Black MODA_RHGRAVITY_DESIGNER : Designer Black
Note	For Bolt Through use 106C_FACEPLATE Concealed Fix Face Plate (Available in Satin Chrome Plate only)
For installation instructions download the Metlam Australia App	 



Downloads & Resources

Care & Maintenance
Installation instructions

INSTALLATION INSTRUCTIONS

Associated Videos

The game changer that you've been waiting for

Stainless Steel Cleaning & Maintenance

How to install a Metlam Australia Moda Gravity Hinge

*The photographs and line drawings of the products presented above are representational only.
Metlam Australia Pty Ltd reserves the right to, and from time to time, make changes and improvements in design and dimensions.*