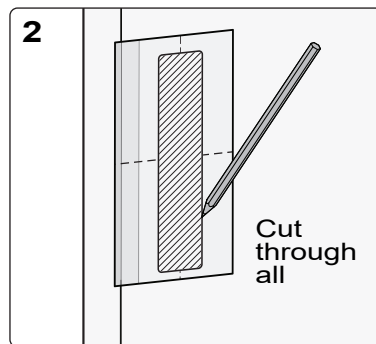
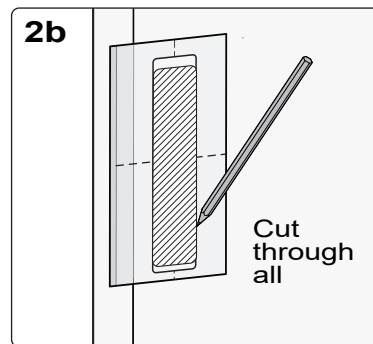


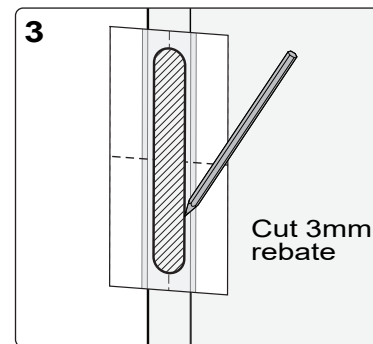
1 Mark midline on all 3 faces of the door. Choose a height that will be comfortable for all users to reach.



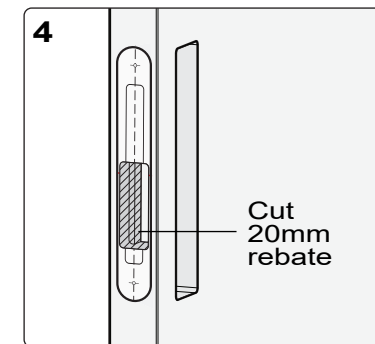
2 Wood Cutout: Remove middle section of flush pull template and mark cutout outline. Use midline as height reference. Mark for desired backset (35 or 50/55mm). Cut through all.



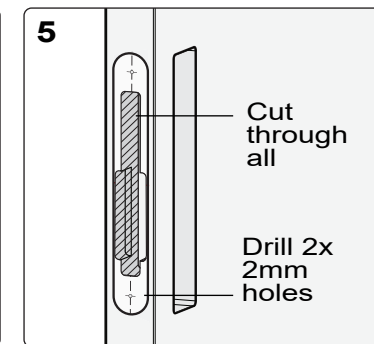
2b Aluminium Cutout: Match midline with template midline and position for desired backset. Mark aluminium cutout outline. Cut through all.



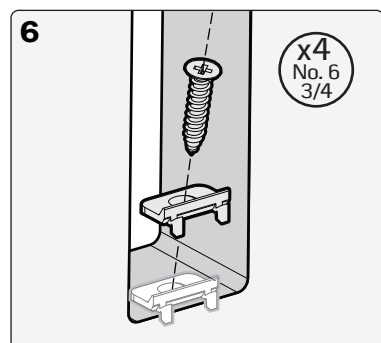
3 Remove middle section of lock template and mark rebate outline on end of door. Use midline as height reference. Cut 3mm rebate.



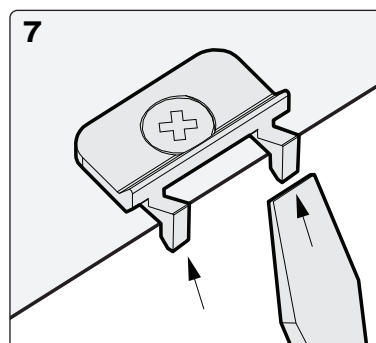
4 Place middle section of template into rebate and mark second rebate outline. Ensure it is the correct way up. Cut 20mm rebate



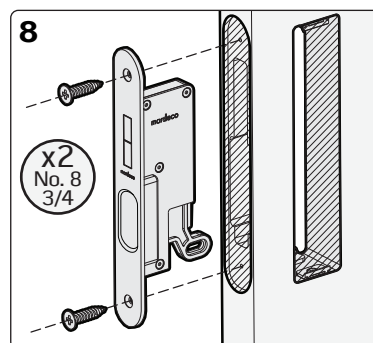
5 Mark the third rebate outline. Cut through into flush pull cavity. Mark screw hole locations. Drill two 2mm dia holes for the screws.



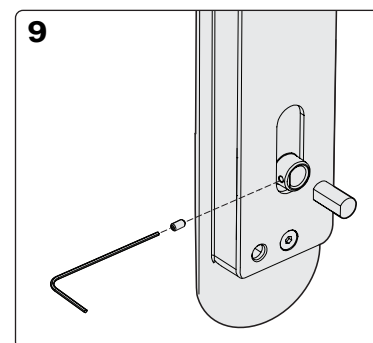
6 For wooden doors: install two woodfix brackets at top and bottom of cutout on both sides of the door.



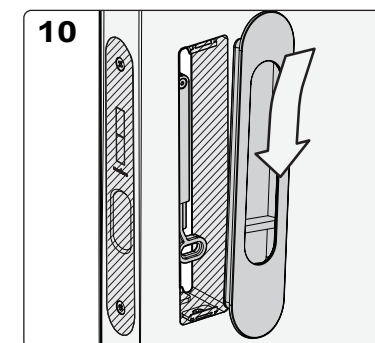
7 Fix bracket in centre of the cutout, ensuring that the tabs are hanging off the lip of the cutout. This ensures correct positioning. Once screw is fitted, use screwdriver to snap off positioning tabs.



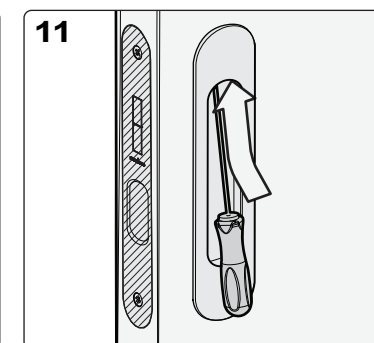
8 Insert the Privacy Lock assembly and secure with two No.8 3/4screws. Check lock is set up for the correct backset: see instructions for changing the backset.



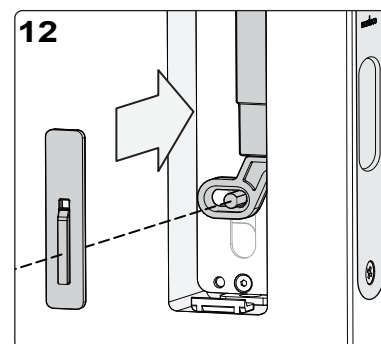
9 Select the correct spindle size from the guide on the contents page. Insert spindle into the flush pull with slide lock and secure with grub screw.



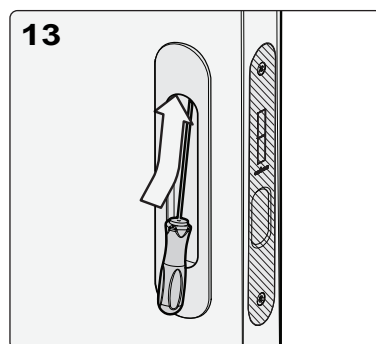
10 Insert the flush pull with the slide lock into cavity on the chosen side of the door. Push in and down so it grips onto the bottom bracket or edge.



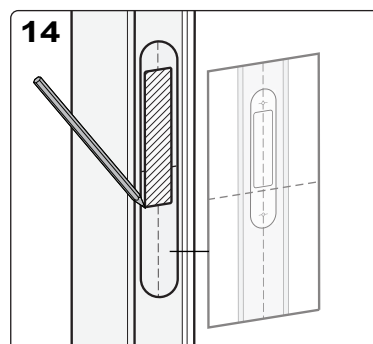
11 Use Mardeco hex tool to tighten grub screw inside top of flush pull. Ensure it is fitted firmly.



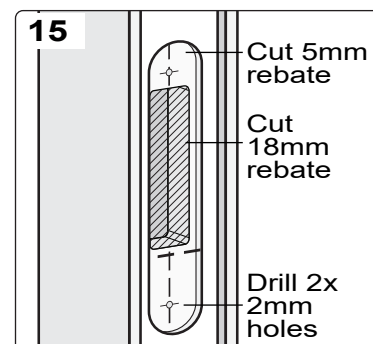
12 Insert emergency release onto the spindle.



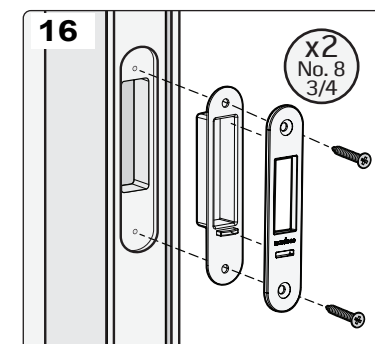
13 Insert second Flush Pull (Emergency release side) ensuring the Emergency release fits into the vertical slot on the back of the Flush pull.



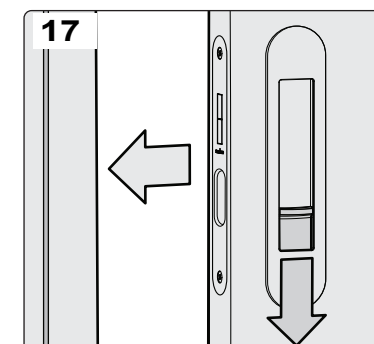
14 Remove middle section of striker plate template and mark outline for rebate. Use midline as height reference and ensure it lines up with the door. Cut a 5mm rebate.



15 Place middle section of template into rebate and mark second rebate outline. Ensure it is the correct way up. Cut 18mm rebate. Mark screw holes and drill two 2mm holes 15mm deep.



16 Insert striker plate assembly and secure with two No.8 3/4 screws.



17 Test that everything works well and make any necessary adjustments.

mardeco[®]
international ltd
we handle the best